

HORIZONTAL FLUE TERMINAL - 1000mm

LOGIC Combi

LOGIC + Combi

LOGIC Heat

LOGIC + Heat

LOGIC System

LOGIC + System

When replacing any part on this appliance, use only spare parts that you can be assured conform to the safety and performance specification that we require. Do not use reconditioned or copy parts that have not been clearly authorised by Ideal.

For the very latest copy of literature for specification and maintenance practices visit our website www.idealheating.com where you can download the relevant information in PDF format.

INTRODUCTION

This kit is suitable only for the domestic gas boilers listed below :

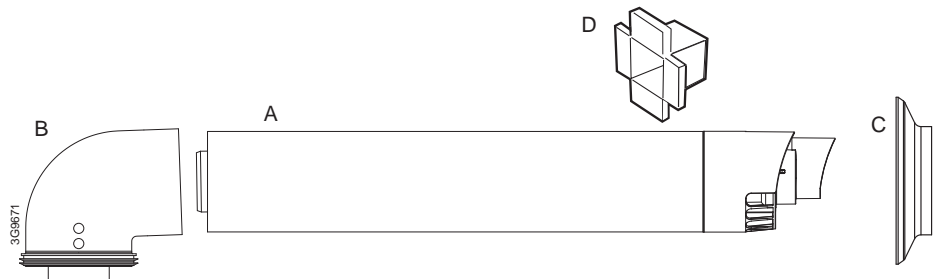
Logic Combi 24	G.C. No. 47-348-56	Logic + Heat 15	G.C. No. 41-409-98
Logic Combi 30	G.C. No. 47-348-57	Logic + Heat 18	G.C. No. 41-409-99
Logic Combi 35	G.C. No. 47-348-58	Logic + Heat 24	G.C. No. 41-750-21
Logic + Combi 24	G.C. No. 47-348-65	Logic + Heat 30	G.C. No. 41-750-22
Logic + Combi 30	G.C. No. 47-348-66	Logic System 15	G.C. No. 41-750-24
Logic + Combi 35	G.C. No. 47-348-67	Logic System 18	G.C. No. 41-750-25
Logic Heat 12	G.C. No. 41-399-99	Logic System 24	G.C. No. 41-750-26
Logic Heat 15	G.C. No. 41-409-93	Logic System 30	G.C. No. 41-750-27
Logic Heat 18	G.C. No. 41-409-94	Logic + System 15	G.C. No. 41-750-29
Logic Heat 24	G.C. No. 41-409-95	Logic + System 18	G.C. No. 41-750-30
Logic Heat 30	G.C. No. 41-409-96	Logic + System 24	G.C. No. 41-750-31
Logic + Heat 12	G.C. No. 41-409-97	Logic + System 30	G.C. No. 41-750-32

These instructions must be read in conjunction with the Installation and Servicing Instructions supplied with the boiler.

This kit allows the boiler flue outlet to be fitted horizontally through wall thicknesses of up to 600mm with no hidden joints.

KIT CONTENTS

- A. Flue Terminal
- B. Flue Turret 1000mm
- C. Rubber Terminal Wall Seal
- D. Cutting Aid



1 DETERMINING THE FLUE LENGTH AND FLUE PACKS REQUIRED

IMPORTANT. The boiler MUST be installed in a vertical position

FLUE KITS

Pack D - optional extension kit for side flue or rear flue outlet.

Concentric Flue Screw Retaining Kit - optional kit for mechanical fixing of flue joints.

Finishing Kit - Supplied as an optional extra.

Dimension X - Wall thickness.

Dimension L - Wall thickness plus boiler spacing.

Dimension S - Optional stand-off frame depth 45mm.

Note. MAXIMUM FLUE LENGTHS:

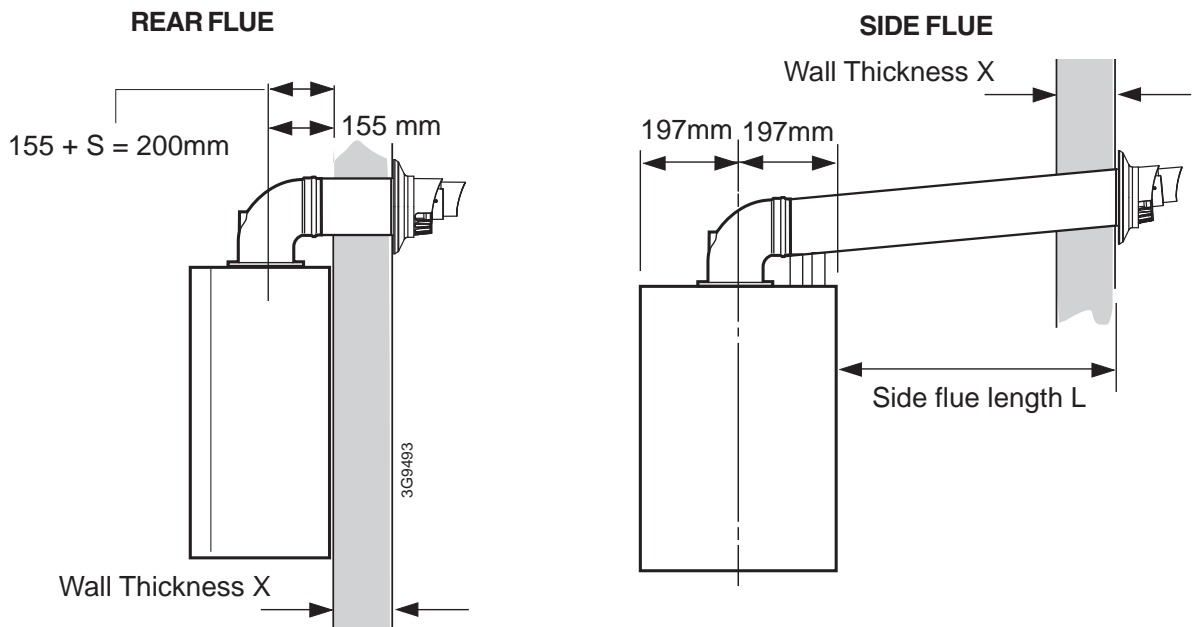
12, 15, 18, 24 - 9M (HORIZONTAL FLUE)

30 - 8M (HORIZONTAL FLUE)

35 - 6M (HORIZONTAL FLUE)

MINIMUM HORIZONTAL FLUE LENGTHS - TELESCOPIC TERMINAL = 350MM

(Centre Line of turret to outside of wall terminal) - ONE PIECE TERMINAL = 285MM



HORIZONTAL FLUE TERMINAL (1000MM)

Total Flue length dimension (measuring from CL of turret to outside wall)		Flue	
Rear flue dim. X+155	Side flue dim. L+197	Extra packs required	Boiler Size
Up to 870 mm	Up to 870 mm	none	12,15,18,24,30,35
Up to 1820 mm	Up to 1820 mm	Pack D - 1 off	12,15,18,24,30,35
Up to 2770 mm	Up to 2770 mm	Pack D - 2 off	12,15,18,24,30,35
Up to 3720 mm	Up to 3720 mm	Pack D - 3 off	12,15,18,24,30,35
Up to 4670 mm	Up to 4670 mm	Pack D - 4 off	12,15,18,24,30,35
Up to 5620 mm	Up to 5620 mm	Pack D - 5 off	12,15,18,24,30,35
Up to 6570 mm	Up to 6570 mm	Pack D - 6 off	12,15,18,24,30,35*
Up to 7520 mm	Up to 7520 mm	Pack D - 7 off	12,15,18,24,30
Up to 8470 mm	Up to 8470 mm	Pack D - 8 off	12,15,18,24,30**
Up to 9000 mm	Up to 9000 mm	Pack D - 9 off	12,15,18 & 24***

*Logic Combi 35 is capable of 6m flue only

** Logic Combi, Heat & System 30 are capable of 8m flue only

*** Logic Heat & System 12,15,18 & 4 are capable of 9m flue only

Notes.

- It is recommended that a support bracket is fitted for every 1 metre of extension pipe used and a bracket should be used at every joint, to ensure pipes are held at the correct angle. If a slip joint coupling is to be used then a bracket should be used to secure the collar.
- When extension 'D' packs are used the flue duct MUST be inclined at 1.5 degrees to the horizontal to allow condensate to drain back into the boiler and out through the condensate drain.
- If the B pack, or telescopic B pack only are used, they may be mounted horizontally. The 1.5 degrees is taken care of by the inclination of the flue within the air pipe.
- Only use water as a lubricant during assembly.

2 FLUE ASSEMBLY - Exploded View

An optional flue duct extension kit is required for wall thicknesses greater than :

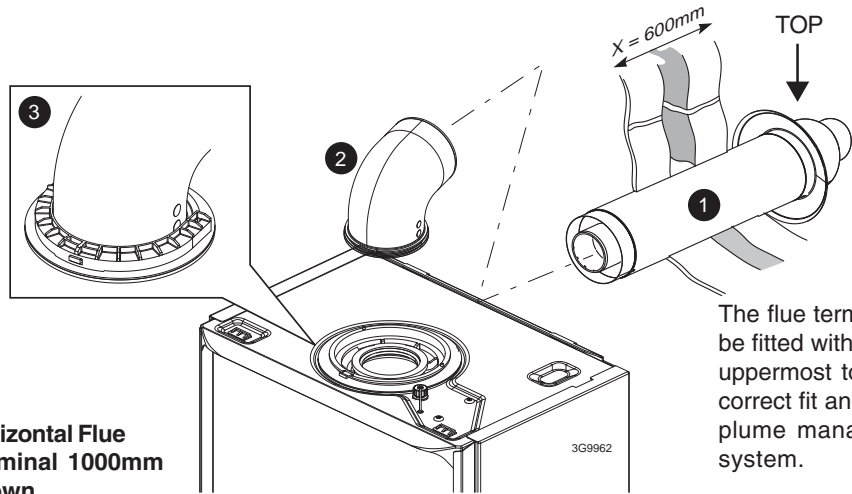
Side 730mm

Rear 770mm

LEGEND

1. Duct assembly.
2. Flue turret.
3. Turret clamp.

Horizontal Flue Terminal 1000mm shown



The flue terminal MUST be fitted with the 'TOP' uppermost to allow the correct fit and use of the plume management system.

3 WALL MOUNTING TEMPLATE

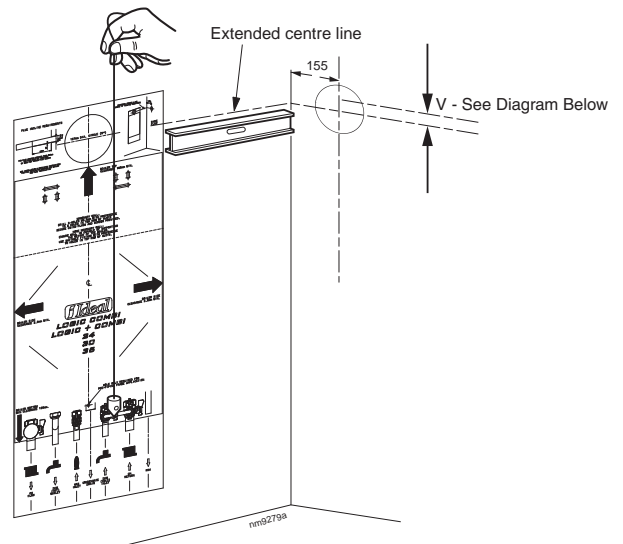
The wall mounting template is located on the internal protective packaging.

Note.

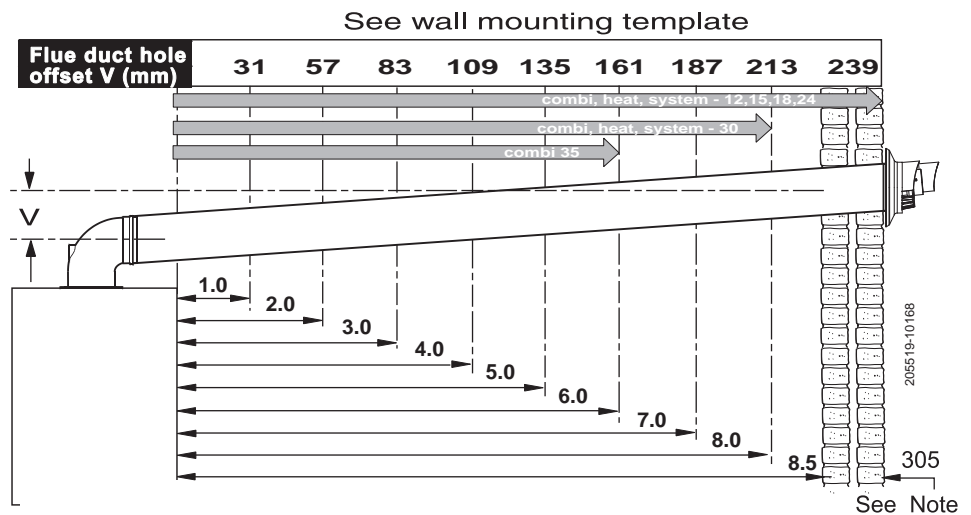
The template shows the positions of the fixing holes and the rear flue hole centre for standard installation. Care MUST be taken to ensure the correct holes are drilled.

1. Tape template into the selected position. Ensure squareness by hanging a plumbline as shown.
2. If fitting a side flue extend the flue centre line onto the side wall and measure in 155mm for standard installation.
3. Mark onto the wall the following:
 - a. The wall mounting plate screw positions (choose one from each group).
 - b. The position of the flue duct hole (see diagram below).

Note. Mark the centre of the hole as well as the circumference.



4. Remove the template from the wall.



Notes.

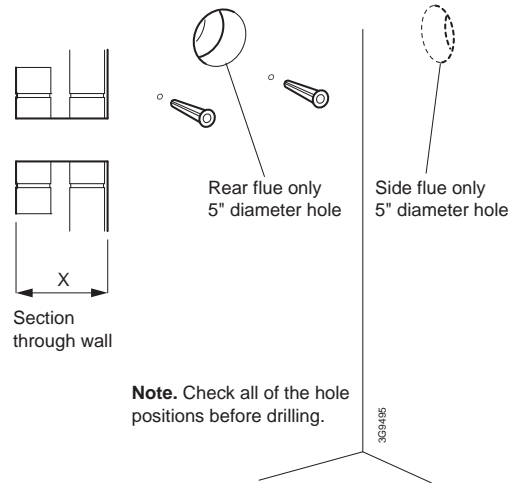
1. If the wall thickness is greater than 305mm then dimension "H" must be reduced by the same amount and the offset may be adjusted accordingly.
 2. For flue lengths greater than 600mm the flue must be inclined by 26mm per 1000mm flue length.
- * "H" = Distance in metres from side of the boiler to the side wall

4 PREPARING THE WALL

IMPORTANT.

Ensure that, during the cutting operation, masonry falling outside of the building does not cause damage or personal injury.

1. Cut the flue hole (preferably with a 5" core boring tool), ensuring that the hole is square to the wall. Both wall faces immediately around the cut hole should be flat.
2. Drill 2 holes with a 7.5mm / 8mm masonry drill and insert the plastic plugs, provided, for the wall mounting plate.
3. Locate 2 No.14 x 50mm screws in the piping frame (one at each side, in any of the 3 holes provided at each side) and screw home.

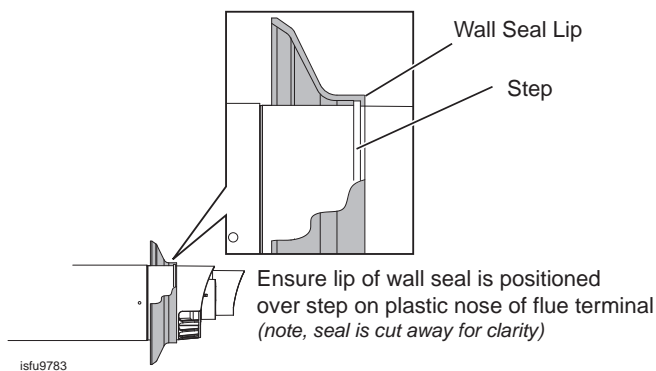


Note. Check all of the hole positions before drilling.

5 TERMINAL WALL SEAL ASSEMBLY / POSITIONING

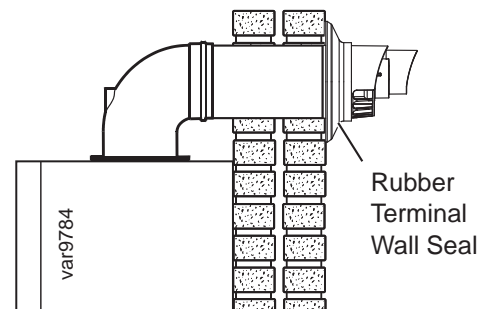
Prior to fitting the flue, the rubber terminal wall seal provided in the flue pack MUST be fitted to the flue terminal as shown below in Figure 1.

FIGURE 1



Once the flue is installed it is IMPORTANT that the rubber terminal wall seal is pressed against the outside wall to create an adequate seal between the flue and wall as shown in Figure 2.

FIGURE 2



6 SETTING THE FLUE - REAR & SIDE

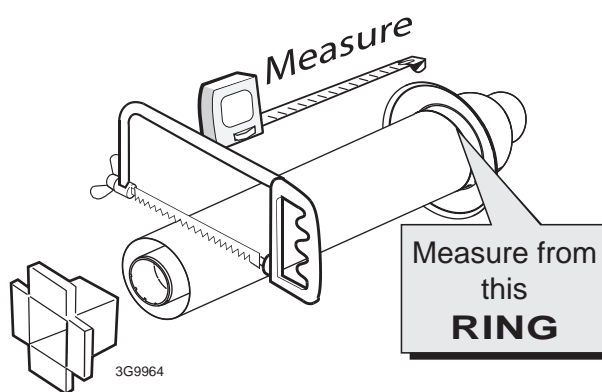
SETTING THE FLUE - REAR

Wall thickness of 115mm to 770mm

Notes.

- a. If using the extension ducts refer to Installation Instructions.
- b. If the stand-off frame is used it is essential to add 45mm to 'X' the measured wall thickness when marking the flue (this will allow for the fitted frame).

1. Measure and note wall thickness X. Refer to Installation Instructions
2. Add 90mm to dimension X and, measuring from the ring, cut the outer tube only.
3. To ensure the tube is cut square, mark the flue all the way around.
4. Cut the inner tube to a length 20mm longer to aid engagement, using the cutting aid provided.



SETTING THE FLUE - SIDE

Wall thickness of 115mm to 730mm

Notes.

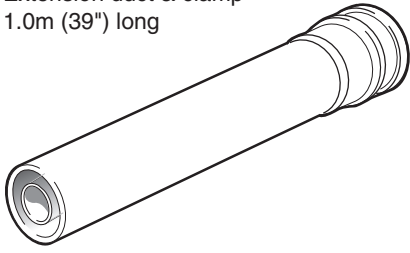
If using the extension refer to Installation Instructions.

1. Measure and note side flue length L. Refer to Installation Instructions.
2. Add 125mm to dimension L and, measuring from the ring, cut the outer tube only.
3. To ensure the tube is cut square, mark the flue all the way around.
4. Cut the inner tube to a length 20mm longer to aid engagement, using the cutting aid provided

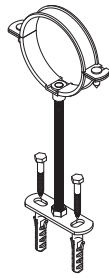
7 FLUE EXTENSION DUCTS - For total flue lengths greater than 885mm

Pack D Flue extension duct kit contents

Extension duct & clamp
1.0m (39") long

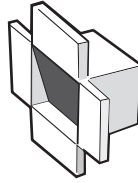


nm8732

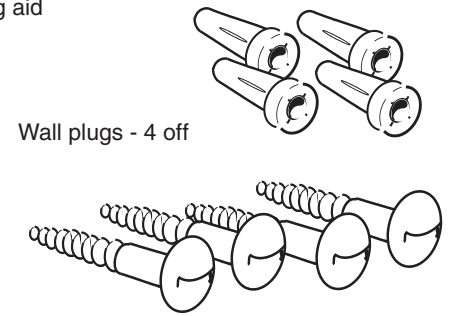


Flue duct support

Flue support cutting aid
(shown folded up)



No. 10 x2" wood screw - 4 off



Wall plugs - 4 off

8 FLUE EXTENSION DUCTS - continued

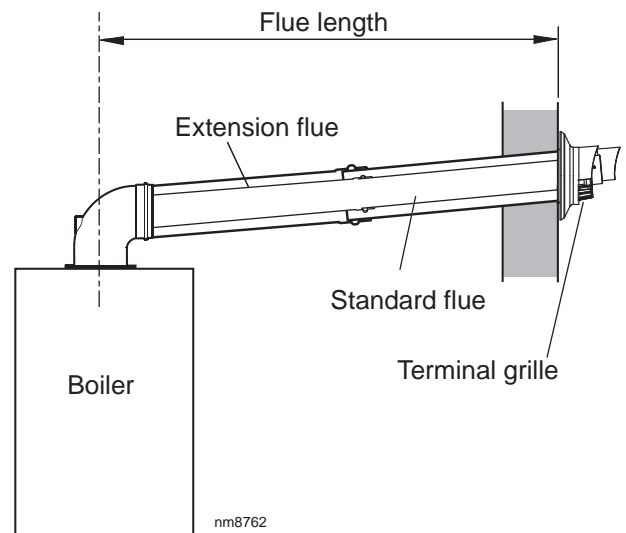
Use a maximum of 9m extended flue ONLY (12,15,18,24)

Use a maximum of 8m extended flue ONLY (30)

Use a maximum of 6m extended flue ONLY (35)

General arrangement

1. A **maximum** number of extension ducts are possible for each boiler output with one suitably cut.
 - 9 extension ducts for 24
 - 8 extension ducts for 30
 - 6 extension ducts for 35Refer to Frame Installation Instructions for lengths.
2. Flue extensions of greater length than 1m should be supported with the bracket provided, suitably adjusted. Refer to Installation Instructions.
3. Only use water as a lubricant during assembly. Do not use mineral based oils.



Technical Training

The Ideal Technical Training Centre offers a series of first class training courses for domestic, commercial and industrial heating installers, engineers and system specifiers. For details of courses please ring: 01482 498 432

Ideal Boilers, P.O. Box 103, National Ave, Kingston upon Hull, HU5 4JN. Telephone: 01482 492 251 Fax: 01482 448 858. Registration No. London 322 137.

Ideal Stelrad Group pursues a policy of continuing improvement in the design and performance of its products. The right is therefore reserved to vary specification without notice.



Ideal Stelrad Group

Ideal Installer/Technical Helpline: 01482 445570
www.idealheating.com